



## Cricketfield Grove, Leigh-On-Sea

### Price Guide £400,000

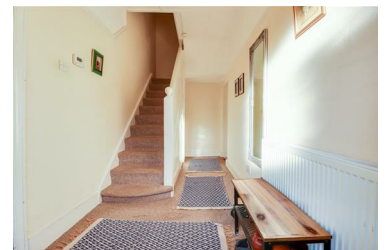


\* £400,000 - £450,000 \* Located on the desirable Cricketfield Grove in Leigh-on-Sea, this charming detached home offers comfortable living in a well-connected coastal location, with plenty of potential to add your own stamp. The property features two spacious double bedrooms, making it an ideal choice for couples, small families, or those looking to enjoy a peaceful seaside lifestyle.

The home benefits from off-street parking, providing everyday convenience, while Chalkwell Train Station is just a short walk away, offering easy access for commuters and visitors alike. Leigh Broadway is also close by, with its wide range of independent shops, cafés, and restaurants creating a lively local atmosphere.

Combining a sought-after location, off-street parking, and the opportunity to personalise, this property presents a wonderful chance to create a home in one of Leigh-on-Sea's most appealing areas.

- Fully detached house
- Driveway for one to two vehicles
- Good sized kitchen diner
- Double glazing and gas central heating
- Walking distance to Leigh and Chalkwell Stations
- Two double bedrooms
- Bay fronted lounge
- Modern three piece bathroom
- Short walk to Leigh Broadways shopping facilities
- No onward chain



1336 London Road, Leigh-on-Sea, Essex, SS9 2UH

Office: 01702 887 496 [los@bearestateagents.co.uk](mailto:los@bearestateagents.co.uk) <http://www.bearestateagents.co.uk/>